

Additional commands

If you want to...	Say
Make corrections	
Invoke the Recognition window to correct <text>	Correct "text" [through/to "text"]
Replaces selected text with item 1 in Recognition Window	Choose "1" or pick "1"
Edit the first item in the Recognition Window	Say that or edit "1"
Edit the first item in the Recognition Window.	Spell that
Edit the first item in the Recognition Window in Spelling Mode	Cancel edit
Launch applications	
Launch application or switch to application if already open	Open <application name> or activate <application name>
Proofreading	
Invoke text-to-speech for the current document	Read the document
Search	
Use Google or Bing or Yahoo! to search the internet for <text> in your default browser	Search Google for <text> Search Bing for <text> Search Yahoo! for <text>
Search Spotlight for <text>	Search the Spotlight for <text>
MouseGrid & cursor movement	
Display a 3x3 mouse grid overlay over the whole screen	MouseGrid
Move the cursor diagonally	Move mouse <direction> and <direction>
Click the mouse	Mouse click
Available Commands Window	
Display the Available Commands Window	Show Available Commands Window

Nuance® Dragon® Dictate for Mac®

Quickstart Guide



Step 1 - Connect Your Microphone

- Plug the USB microphone into an available USB port on your Mac. DO NOT plug the microphone into a USB hub.
- Check that OS X recognizes your microphone by going to the sound panel in System Preferences.



Step 2 - Install Dragon Dictate

- Insert the DVD into your Mac. OS X will automatically open the DVD.
- Double-click the "Install Dragon Dictate" file to begin installation.



Step 3 - Position Your Microphone

- Make sure that the headset microphone is positioned correctly for best results.
- The microphone should be about an inch away from the corner of your mouth.



Step 4 - Launch Dragon Dictate

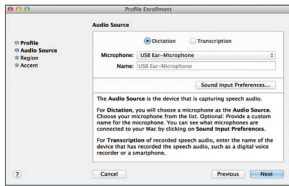
- Locate the Dragon Dictate icon in your Applications folder or in Launchpad.
- Double-click the icon in your Applications folder or single-click on the icon in Launchpad to launch Dragon Dictate.



Copyright © 2014 Nuance Communications, Inc. All rights reserved. Nuance, Dragon, the Dragon logo, and Dictate are trademarks or registered trademarks of Nuance Communications, Inc. or its affiliates in the United States and/or other countries. All other names and trademarks referenced herein are the trademarks or registered trademarks of their respective owners. 51-S61A-31000

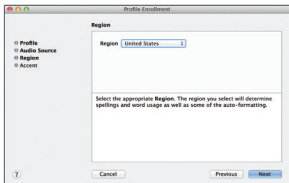
continued on next page

Quickstart guide



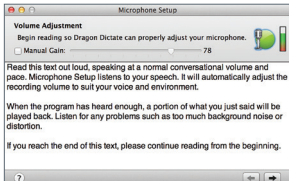
Step 5 - Create your profile

- Dragon will ask you to create a Profile. Begin by naming your Profile.
- Select the type of Audio Source you will be using, either Dictation or Transcription.
 - For Dictation, select the appropriate microphone. The included microphone will be listed as the USB-Ear Microphone.
 - For Transcription of recorded speech audio, provide the name of the device that was used to record the audio, such as a digital voice recorder or smartphone.



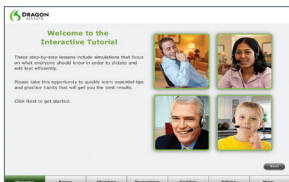
Step 6 - Select your region and accent

- Select your appropriate Region. The region you select will determine spellings and word usage as well as some of the auto-formatting options.
- Select your appropriate Accent. If you are unsure of which Accent to select or none of the choices are applicable, simply select the default.



Step 7 - Microphone setup and voice training

- Dragon needs to adjust the microphone level for best results.
- Dragon will ask you to participate in a quick voice training.
 - Read the text out loud and speak at a normal pace, with a normal tone of voice. As you read, text will turn green when it's successfully recognized. If the text turns red, stop, go back and read the text again. If you cannot make the text turn green, use the Skip Word button.



Step 8 - Interactive tutorial

The Interactive Tutorial is a great way to become familiar with some of the basic operations of Dragon Dictate. Follow the instructions in the Tutorial.

Get started with basic commands

If you want to...	Say
Put the microphone to sleep	Go to sleep
Replace selected text with item 1 in Recognition Window	Wake up
Turn the microphone off	Microphone off
Switch to Dictation mode	Dictation mode
Switch to Command mode	Command mode
Display a window with a list of commands	Show available command windows
Press the Return key once	New line
Press the Return key twice	New paragraph
Press a <key>	Press the <key>
Press the keyboard combination <key> + <key>	Press the <key combo>
Move to the end of the document	Go to end
Move the beginning of the document	Go to beginning
Delete the last thing you said	Scratch that, or forget that
Delete the specified word or words	Delete <text> or (through/to <text>)
Move cursor to just before or after the specified word or words	Insert before/after <text> or (through/to <text>)
Select the specified word or words	Select <text> or (through / to <text>)
Start the next word with a capital letter	Cap <word>
Turn the caps on or caps off	Caps on / caps off
Type the next word in all capital letters	All caps <word>
Turn all caps on or off	All caps on / All caps off